

# it-sensors.com

## Mitec's measuring service on Internet

*It-sensors.com is the new way of measuring and monitoring using Internet. Measuring data from geographically-spread measuring stations with a variety of measuring sensors is presented continually on a private password-protected website.*

**it-sensors™** is a unique measuring service from Mitec that makes it possible to measure and collect measuring data from virtually any type of measuring sensor without computers or software. The only thing you need to do is install a fixed or portable Mitec measuring station. You own the measuring station and we take care of the measuring. You do not have to install or run an IT-system.

Your graphs, statistics and other information will be presented directly on your private it-sensors website, which you log onto using a personal password. You pay a fixed charge as you would pay a telephone subscription.

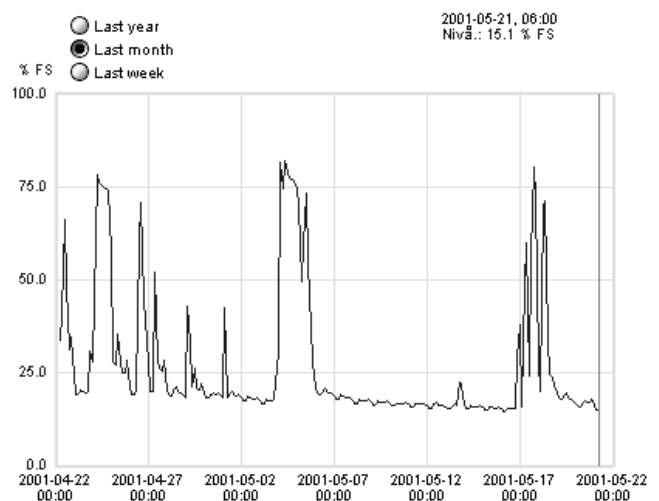
- Ideal for geographically-spread applications.
- Environmental control, tank monitoring, strategic machine monitoring.
- A single measuring site or your own private measuring network with many measuring sites.
- You can easily access your measuring data via Internet from any location.
- Allow others access to your measuring data by giving them a password.
- No operation personel required, low fixed operating costs.

### Subscription

Measuring is managed by Mitec. For a fixed monthly cost you get a login code where you access your measuring data presented in the agreed format. Your subscription is based on how many measuring stations and presentations you require and how often they are updated. New measuring stations are easy to add.

You can also link the data to your own website.

Try our demo yourself. Go to [www.it-sensors.com](http://www.it-sensors.com) and enter the id: "acme" and password: "demo".



Level measurement in a pump station.

### System features

- Automatic presentation on your own Internet site or own local network if preferred.
- No measuring software or computer system required, only Internet Explorer™.
- Continual measuring.
- Alarm via e-mail or SMS to GSM mobile phone.
- Detailed analysis and trend monitoring.
- Can be expanded to thousands of stations.

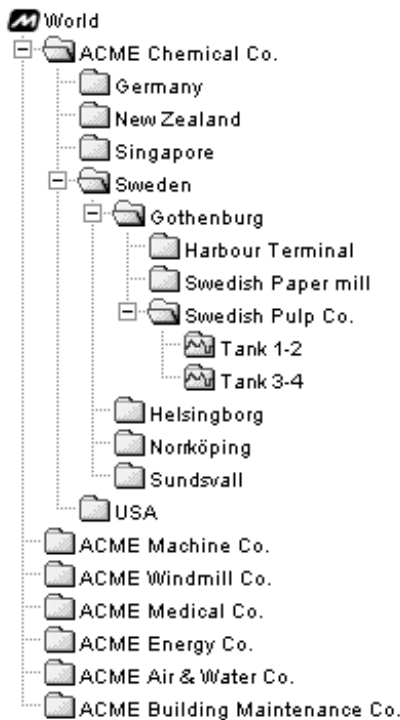
If you prefer to operate the system yourself, we can also install the entire system on your own measuring server.

## Measuring network

You will own your own private measuring-Intranet on it-sensors.com where you login. Data can be collected from a single measuring station or you can build up your own private measuring network (VPMN)<sup>TM</sup> and combine hundreds of measuring stations throughout the world using different types of communication.

Using Internet Explorer or another browser you can see graphs and measuring values from your sensors and measuring stations. You can also receive alarms via SMS and e-mail when a set limit is exceeded.

The presentation is clear and intuitive, reflecting your own work methods and organisation. You can have different passwords that allow access to various levels of information.



The navigation structure is clear and intuitive, and based on the organisation's structure.

## GSM measuring technology

Our measuring stations are based on 20 years experience of measuring technology and communication, with millions of operating hours on our equipment. We deliver turn-key measuring stations, including sensors if required. Communication is via modem or GSM.

Our unique knowledge of low-power measuring technology means we can deliver unmanned measuring stations, battery-operated with GSM communication.

The measuring stations continually register measuring data from connected sensors and deliver quality-assured time-series. One to 128 measuring sensors can be connected to each measuring station.

Using the Mitec SmartCable concept, sensors for pressure, temperature, level, flow, energy and much more can be connected without transformers or "black boxes". Measuring sensors are easy to connect and are automatically identified.



Mitec RMS31/40 measuring station

### Technical data Mitec measuring station

Number of sensors:	4 or 8 separate universal inputs for different sensors. Expandable to 128 sensors / station.
Type of sensor:	Temperature, humidity, pressure, CO <sub>2</sub> , electricity, power, level, flow, pH etc.
Inputs:	Current (4-20mA etc.), Power (0-1V, 0-10V etc.) Pulse, Pt100, thermocouple J, K, T etc.
GSM :	High quality GSM modem / antenna for GSM-net. Telephone subscription included.
Modem (option):	Industry modem for use on public telephone network.